

# THE GREEN BANK APPROACH TO MOBILISING PRIVATE SECTOR INVESTMENT

Kevin Holmes, Chief Governance &  
Strategy Officer

JUNE 2017



# CONTENTS

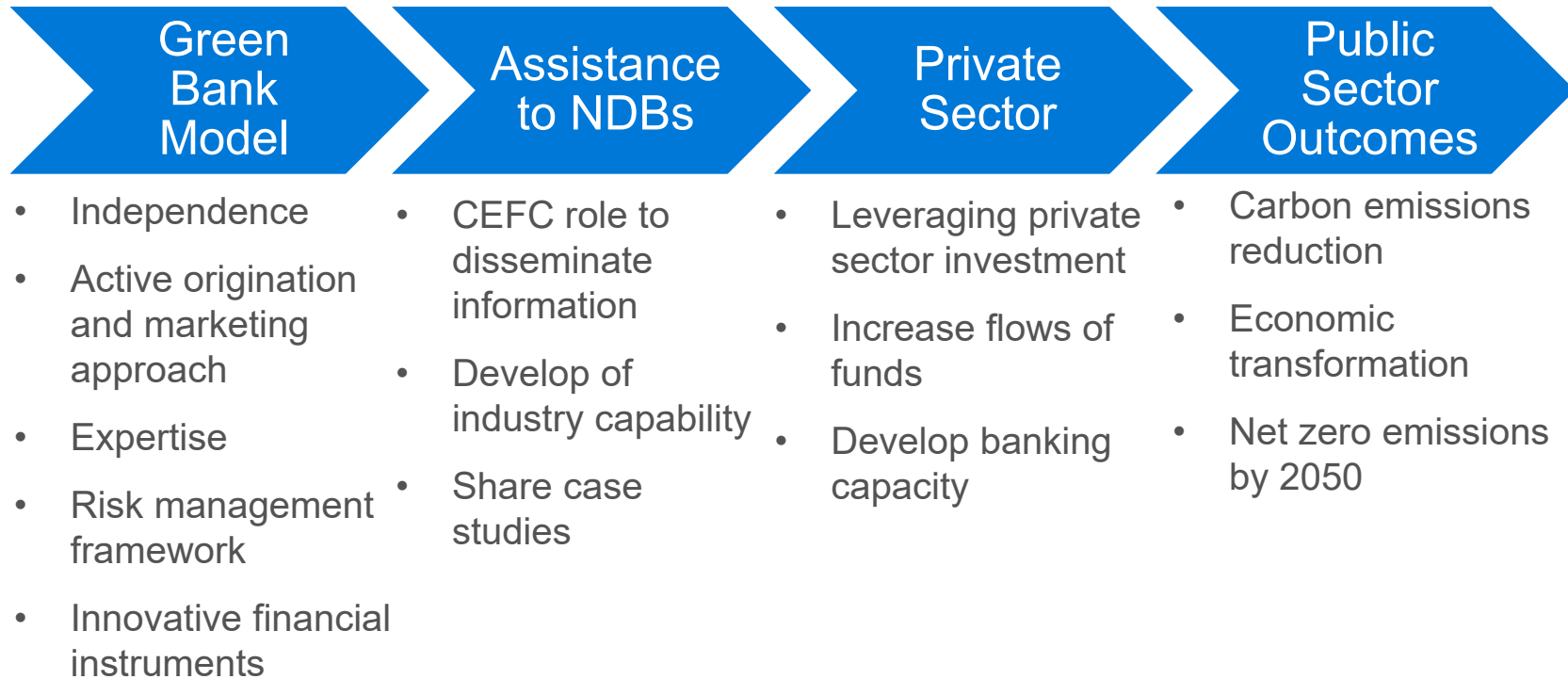
1. CEFC mission
2. About the CEFC model
3. CEFC investment portfolio
4. Strategic Framework
5. CEFC case studies
6. Green banks and NDBs working together

# CEFC MISSION

---

To accelerate **Australia's transformation** towards a more **competitive economy** in a carbon constrained world, by acting as a **catalyst** to **increase investment in emissions reduction.**

# THE GREEN BANK APPROACH



# THE CEFC MODEL AND APPROACH

## **EXPERTISE**

---

Breadth of expertise across sectors

## **COMMERCIAL**

---

Commercial approach, delivering a positive financial return on our investments

## **TRANSFORMATIVE**

---

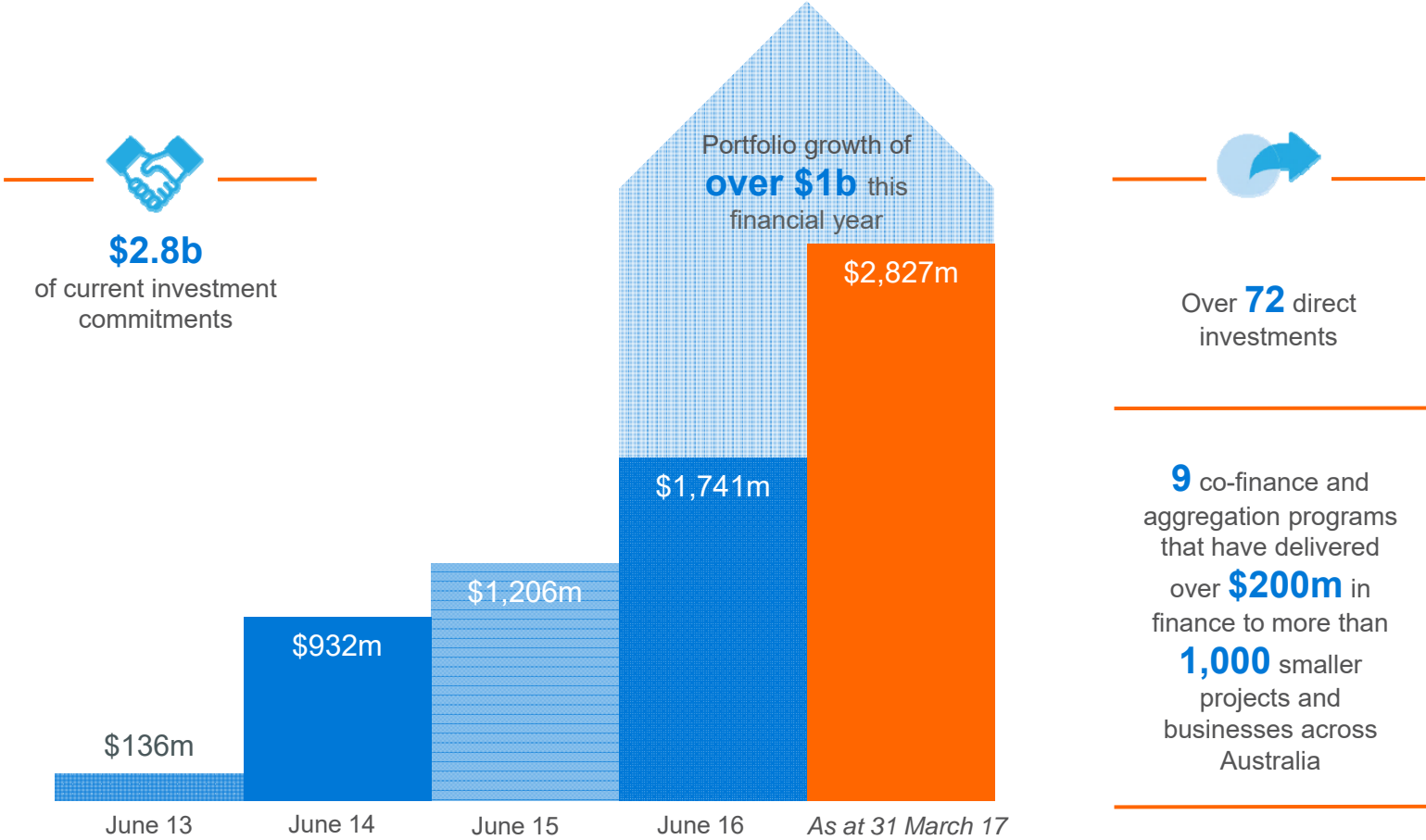
Deliver outcomes which transform Australia's clean energy investments

## **INNOVATIVE**

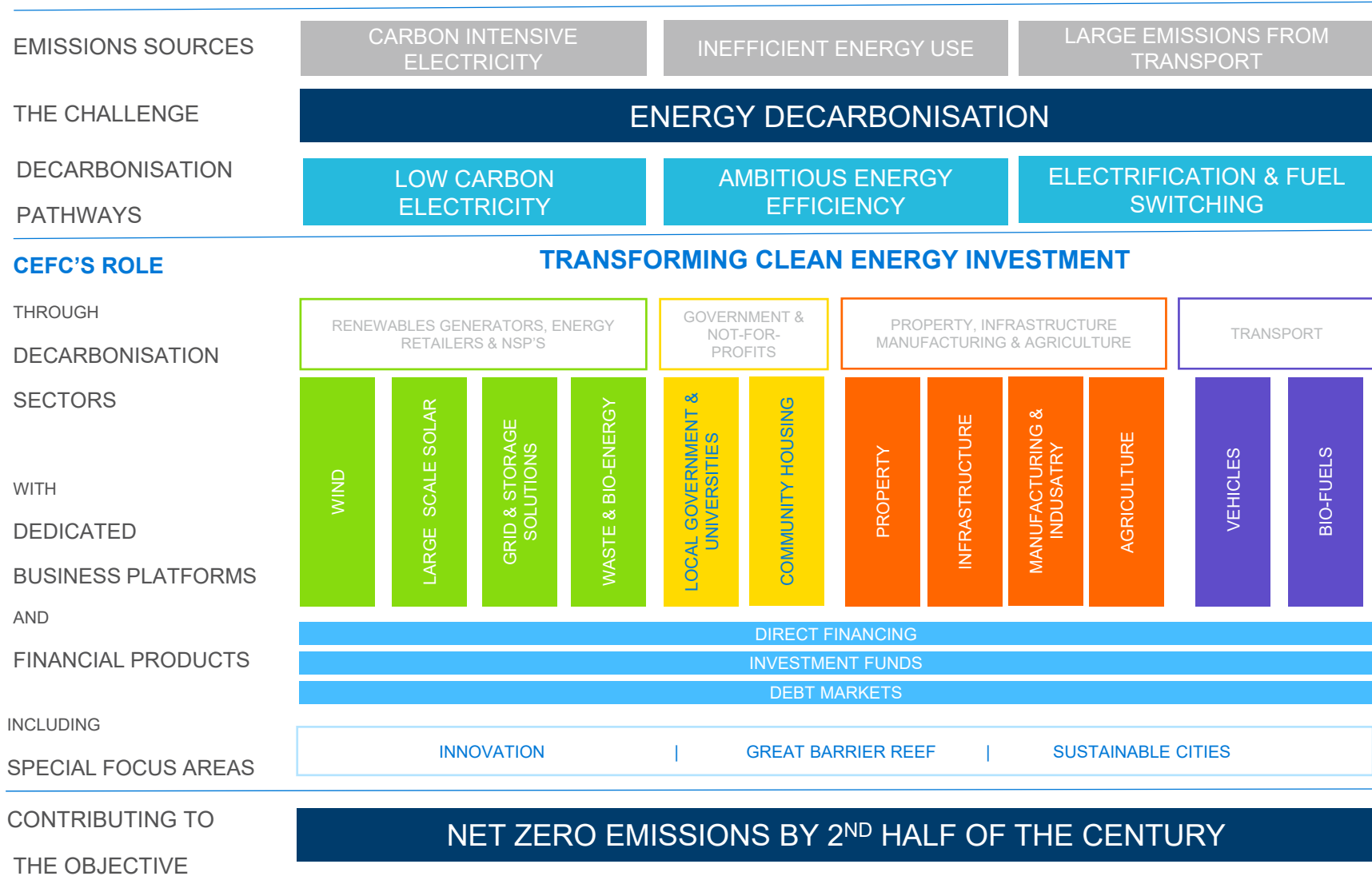
---

Provide a range of innovative finance solutions

# CEFC INVESTMENT PORTFOLIO



# STRATEGIC FRAMEWORK 2017-18



# CEFC CASE STUDIES

INNOVATIVE APPROACHES TO MOBILIZING INVESTMENT



PALISADE RENEWABLE  
ENERGY FUND (PREF)

---

ACCELERATING  
**NEW INVESTMENT**  
IN AUSTRALIA'S  
**NEXT WAVE OF**  
RENEWABLE  
ENERGY  
PROJECTS

**CEFC** | TRANSFORMING  
CLEAN ENERGY  
INVESTMENT



# DEPLOYMENT OF OVER \$200M THROUGH CO-FINANCE & AGGREGATION PROGRAMS - AND GROWING



Over **900** projects for lower emissions light vehicles & farm machinery



Over **300** upgrades to buildings, manufacturing processes or equipment



Over **300** solar PV installations (on or off grid)

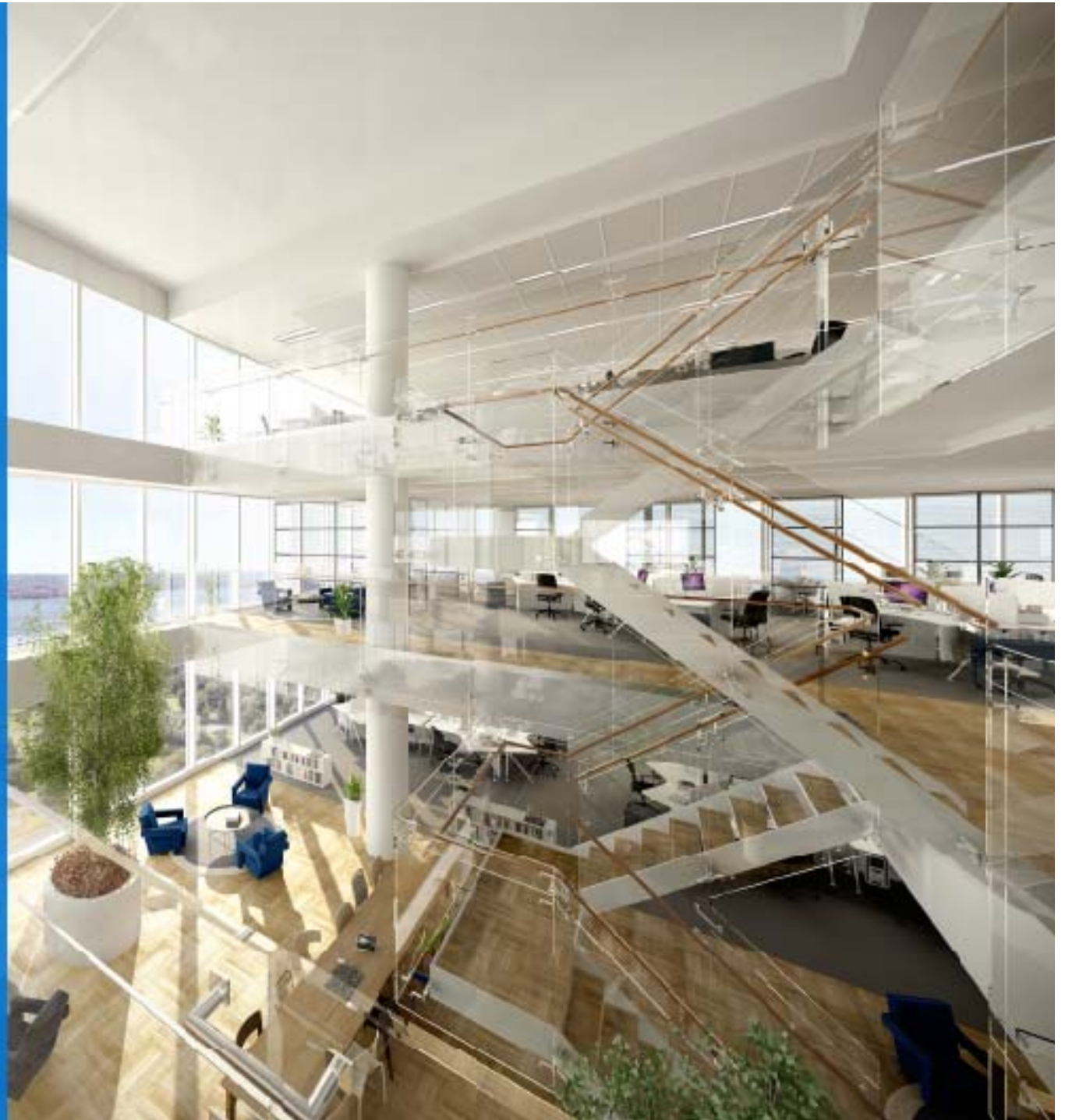
## OVER \$200m via 1,000+ PROJECTS

As at 30 March 2017

INVESTA

**LANDMARK  
AGREEMENT  
TO PUSH THE  
BOUNDARIES  
OF ENERGY  
EFFICIENCY IN  
COMMERCIAL  
PROPERTY**

**CEFC** | TRANSFORMING  
CLEAN ENERGY  
INVESTMENT



GREENSYNC

---

CONTRIBUTING TO  
THE GROWTH  
OF A NEW  
ENERGY  
ECONOMY,  
FOCUSED ON A  
CLEANER  
POWER SUPPLY  
AND  
CARBON  
REDUCTION

**CEFC** | TRANSFORMING  
CLEAN ENERGY  
INVESTMENT



# THE GREEN BANK APPROACH

